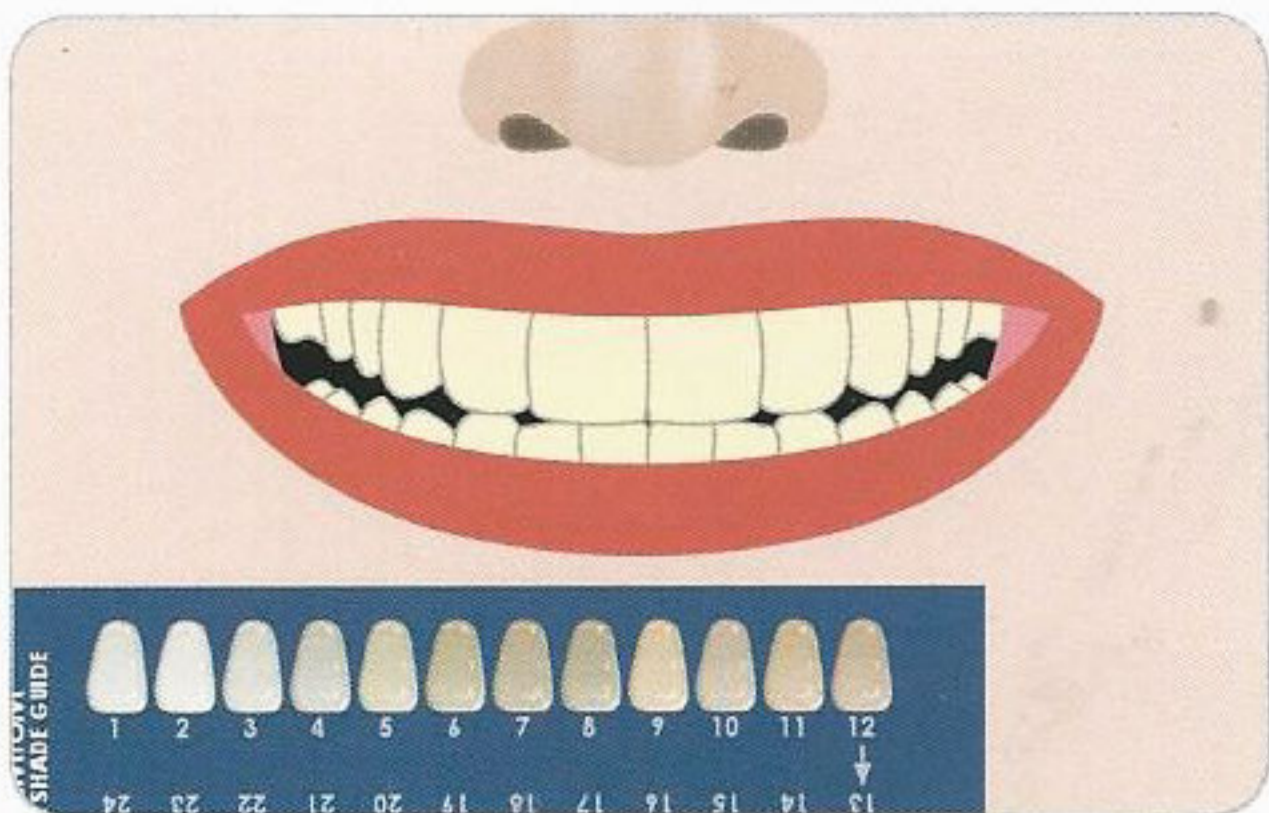
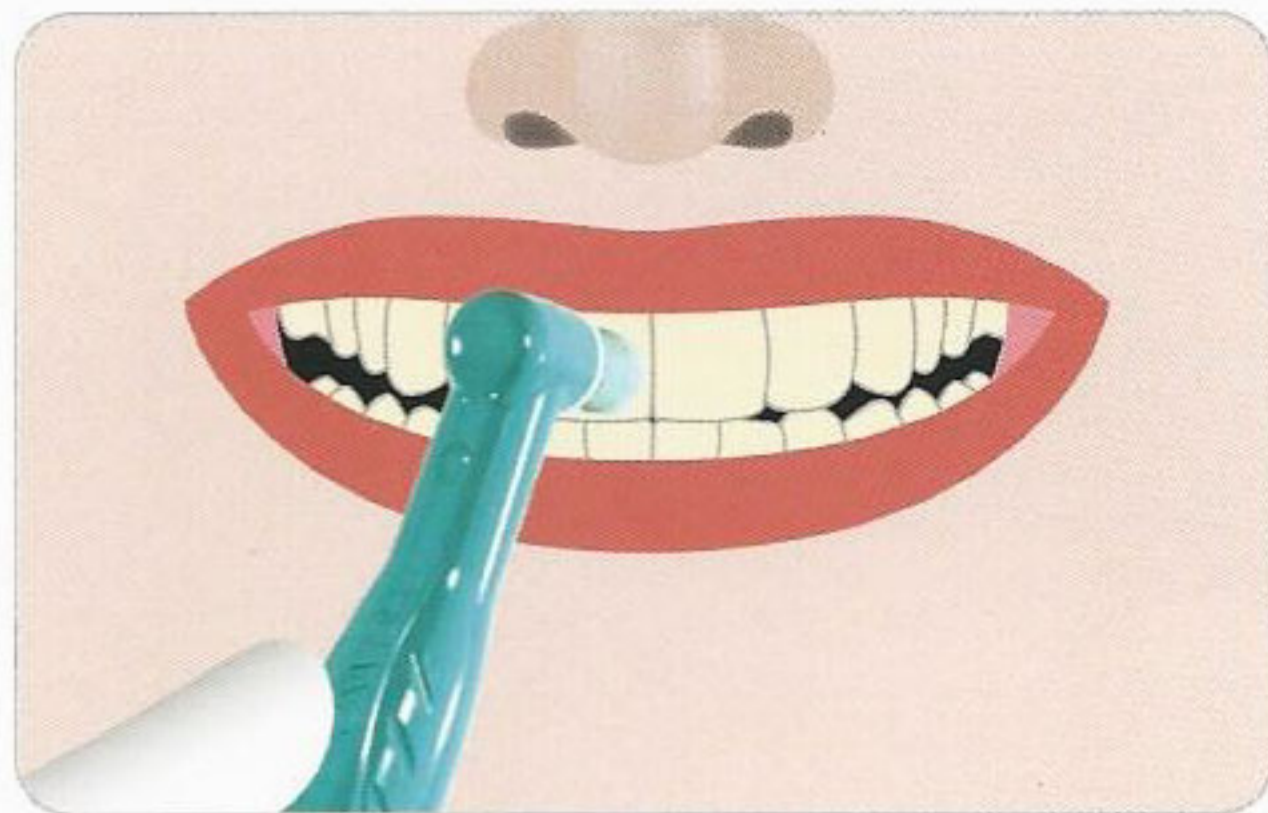


Attention: New instructions. Please read thoroughly.



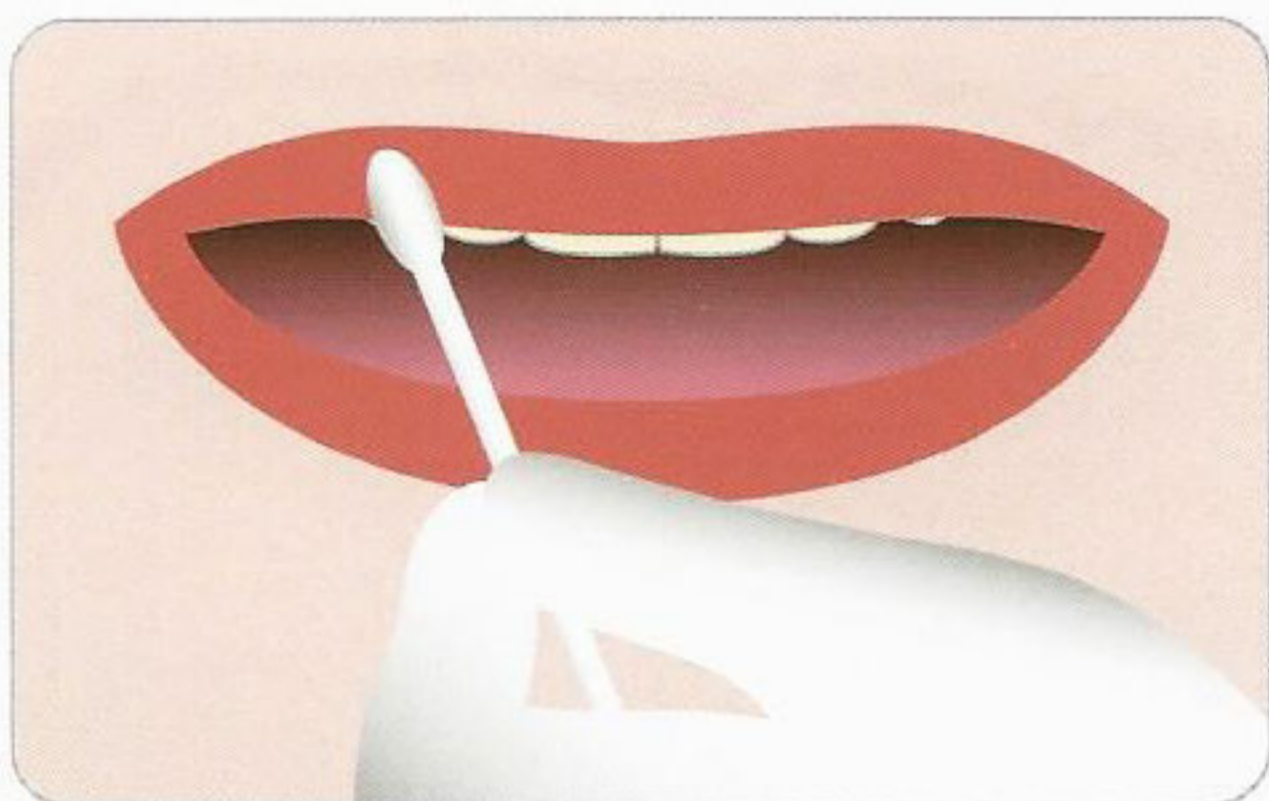
1. Shade Analysis

Prior to beginning the whitening procedure, color match the teeth with the provided Shade Guide and take "before" photographs for your records.



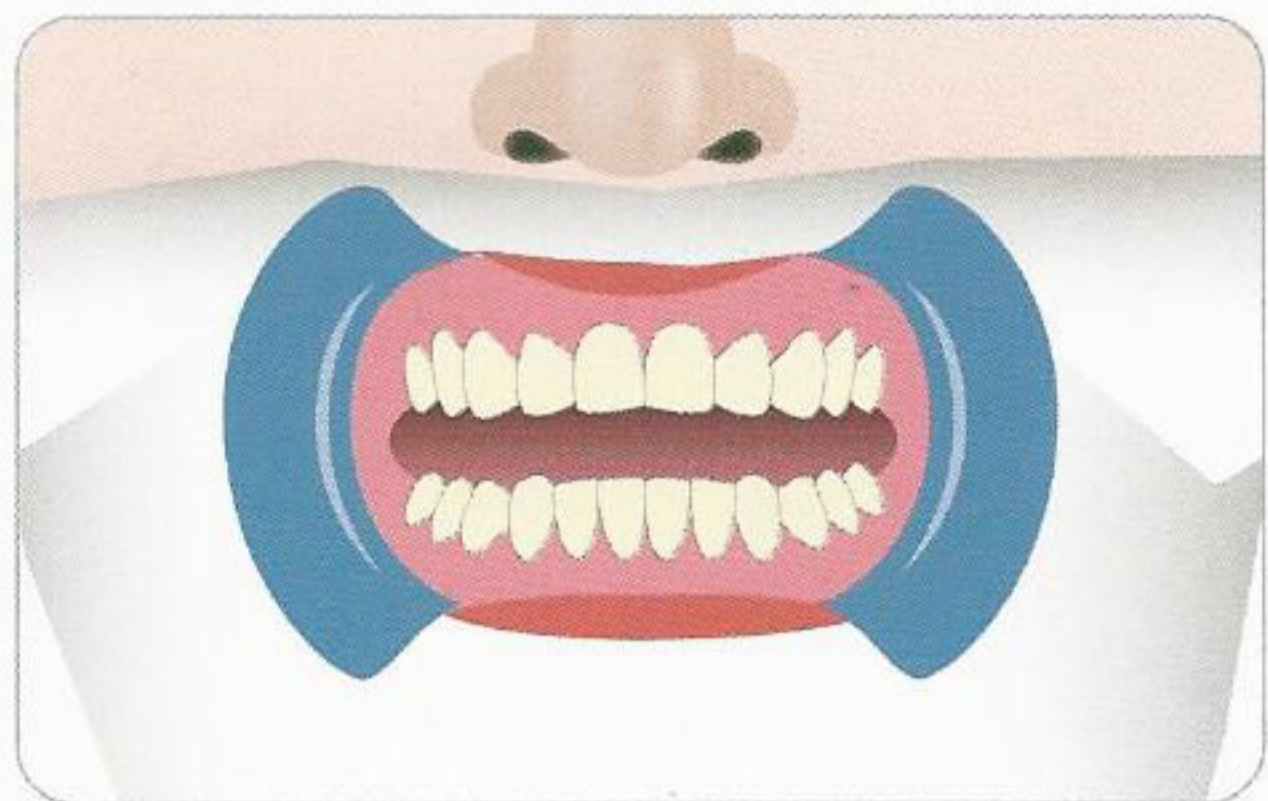
2. Preparation

Clean the teeth by using a prophylaxis angle such as ProAngle™ Ergo and pumice (do not use prophylaxis paste).



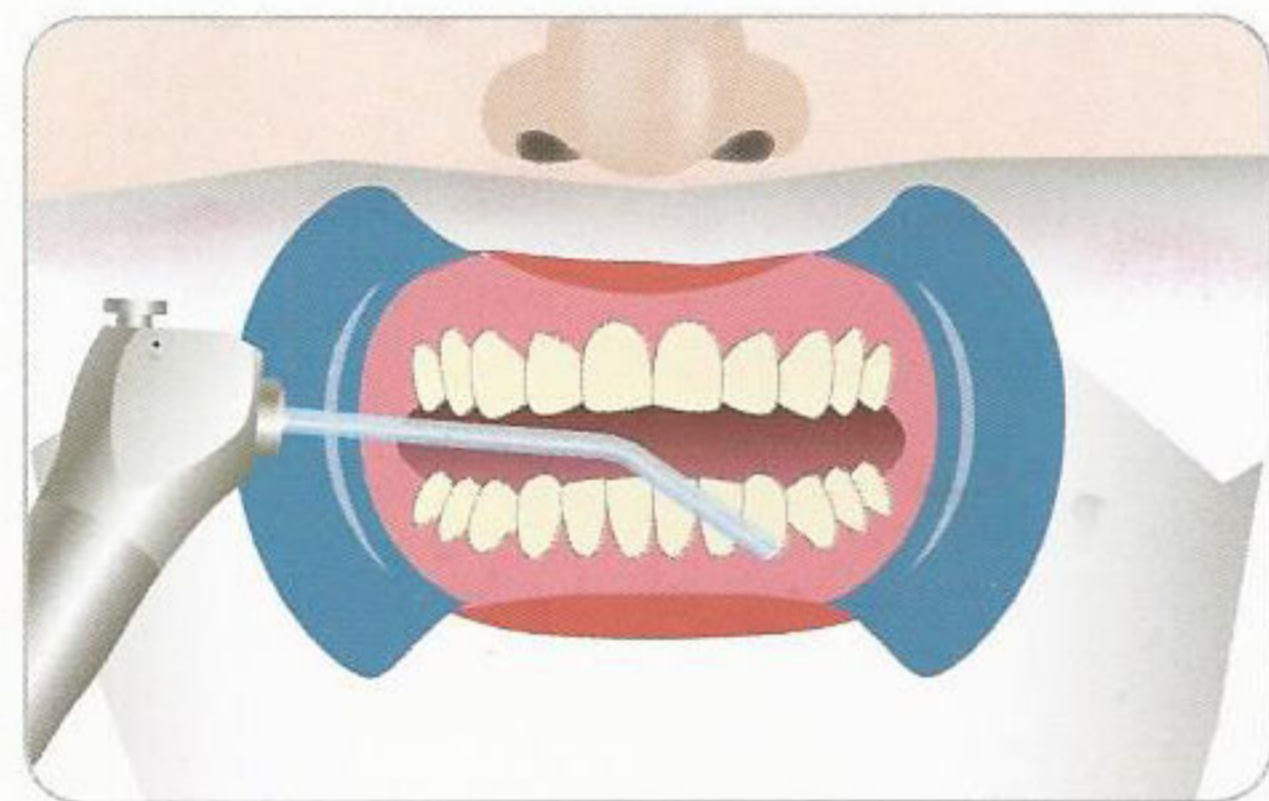
3. Vitamin E Oil Application

Break the Vitamin E swab at the end with a red line, then apply the oil generously to the upper and lower lips, this will help to soothe the tissue during the whitening procedure.



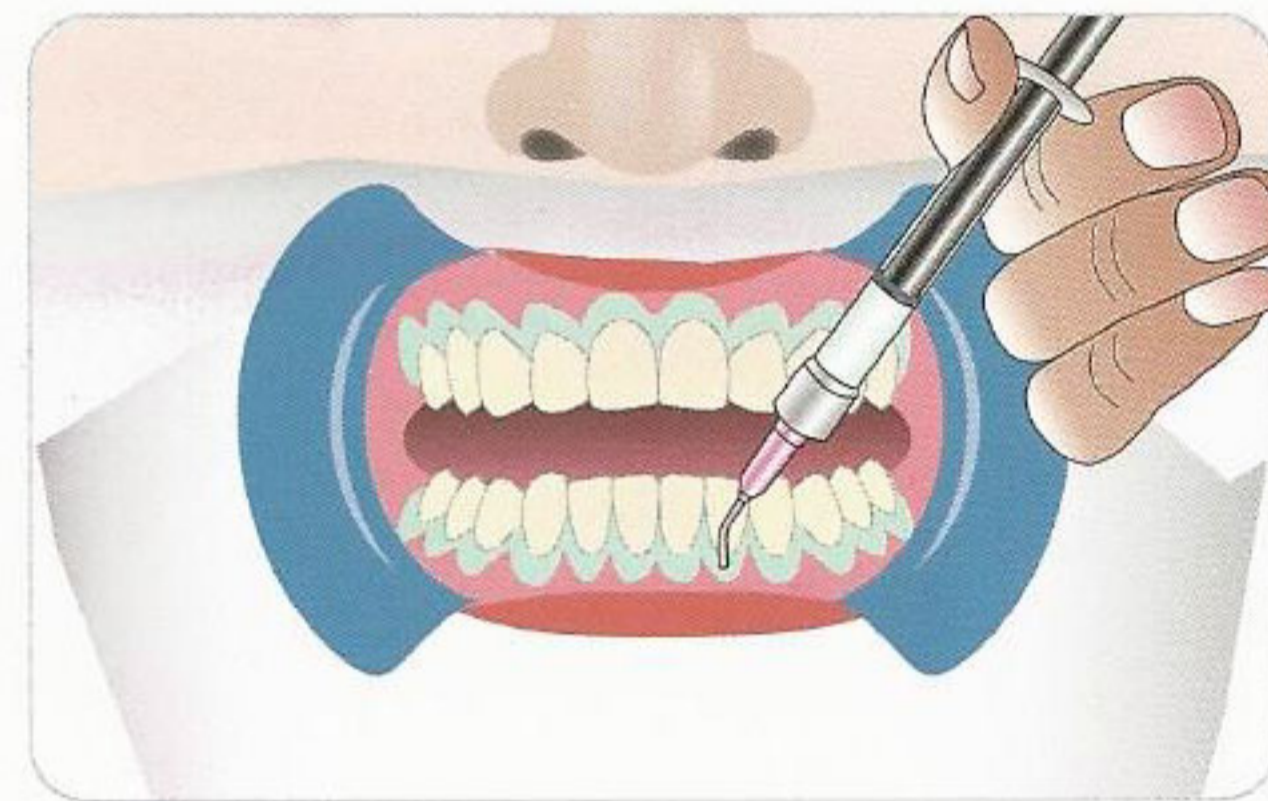
4. Site Setup

Place check retractor and support the lips by placing cotton rolls in the vestibules.



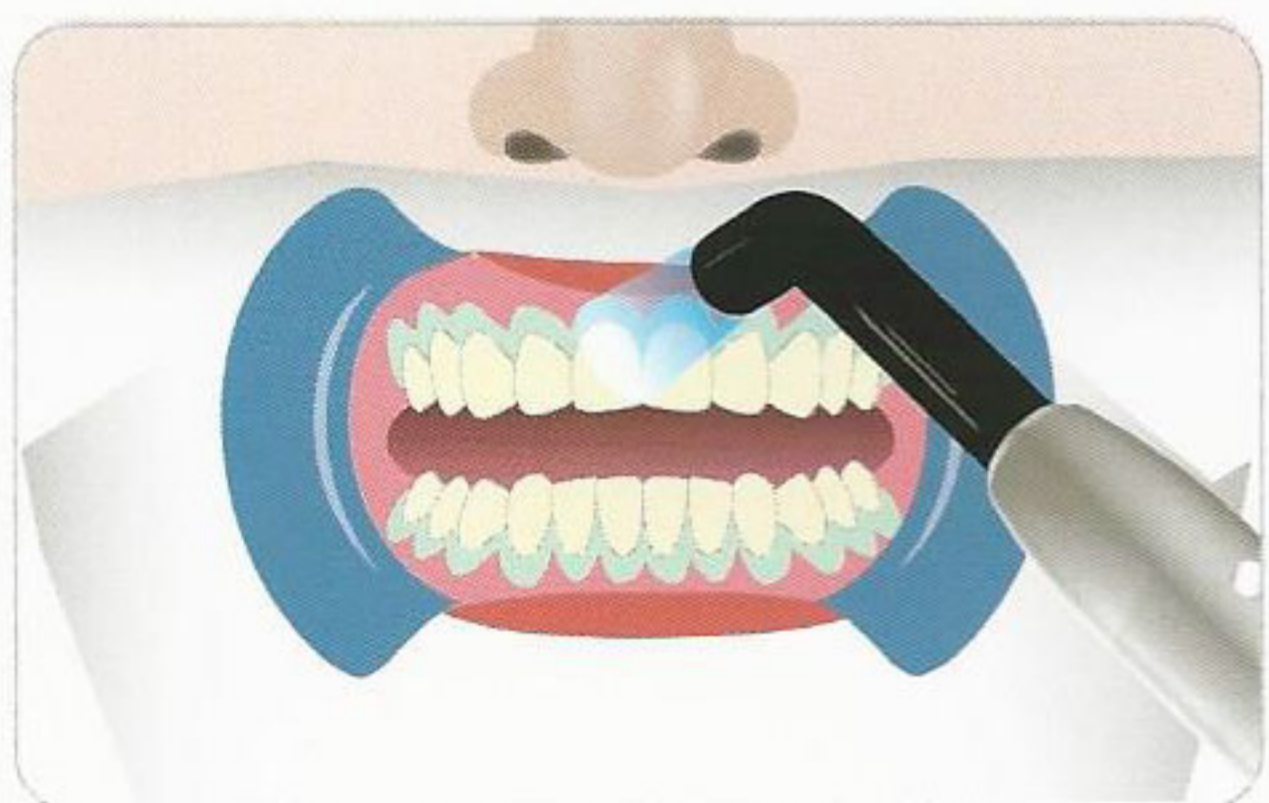
5. Air-Dry Gum

Use an air/water syringe to blow dry the gum area.



6. Gingival Protection

Apply the gingival barrier material onto the gingiva, be sure to cover all exposed root surfaces.



7. Gingival Barrier Curing

Cure each quadrant of the barrier with a curing light for 10 seconds, or with a bleaching light such as iBrite™ for 1 minute for the upper and lower arch separately.



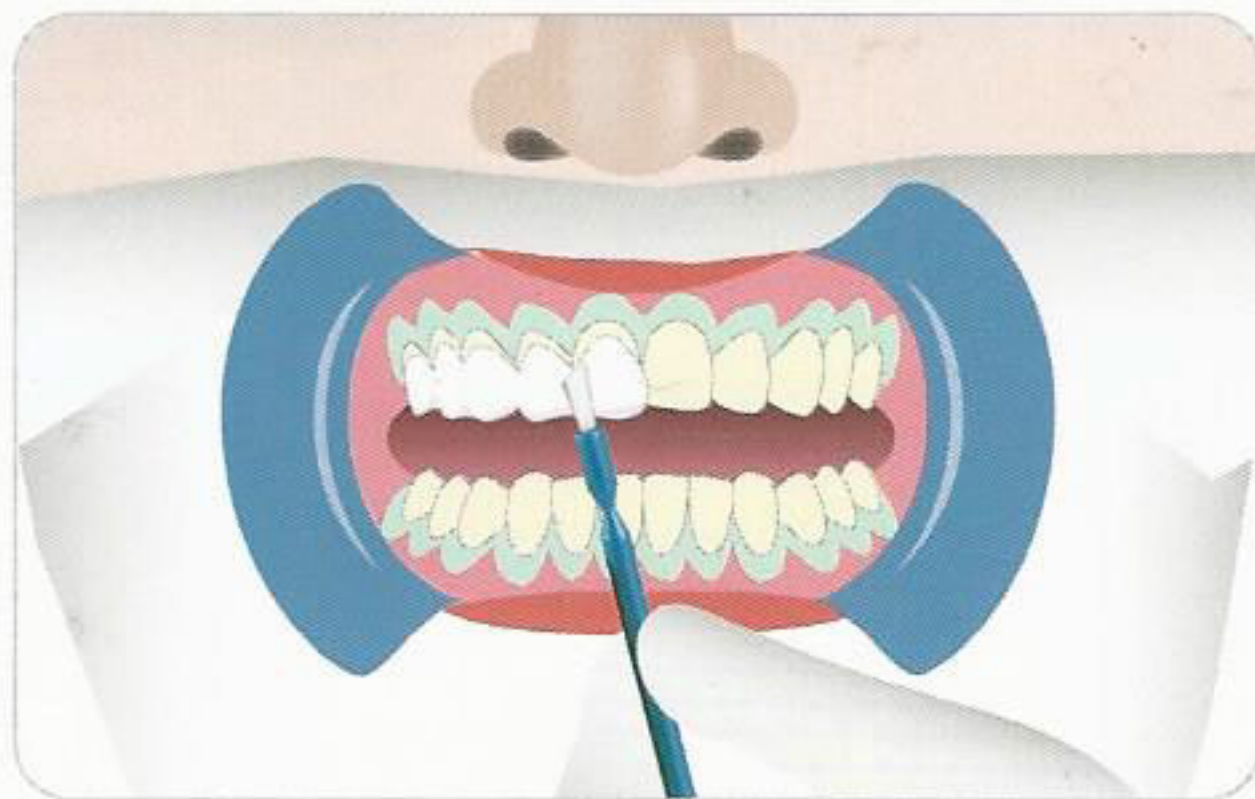
8. Vitamin E Oil Application

Apply another swab of Vitamin E oil to the exposed root surfaces after the gingival barrier application, this will further help to soothe the tissue during the whitening procedure.



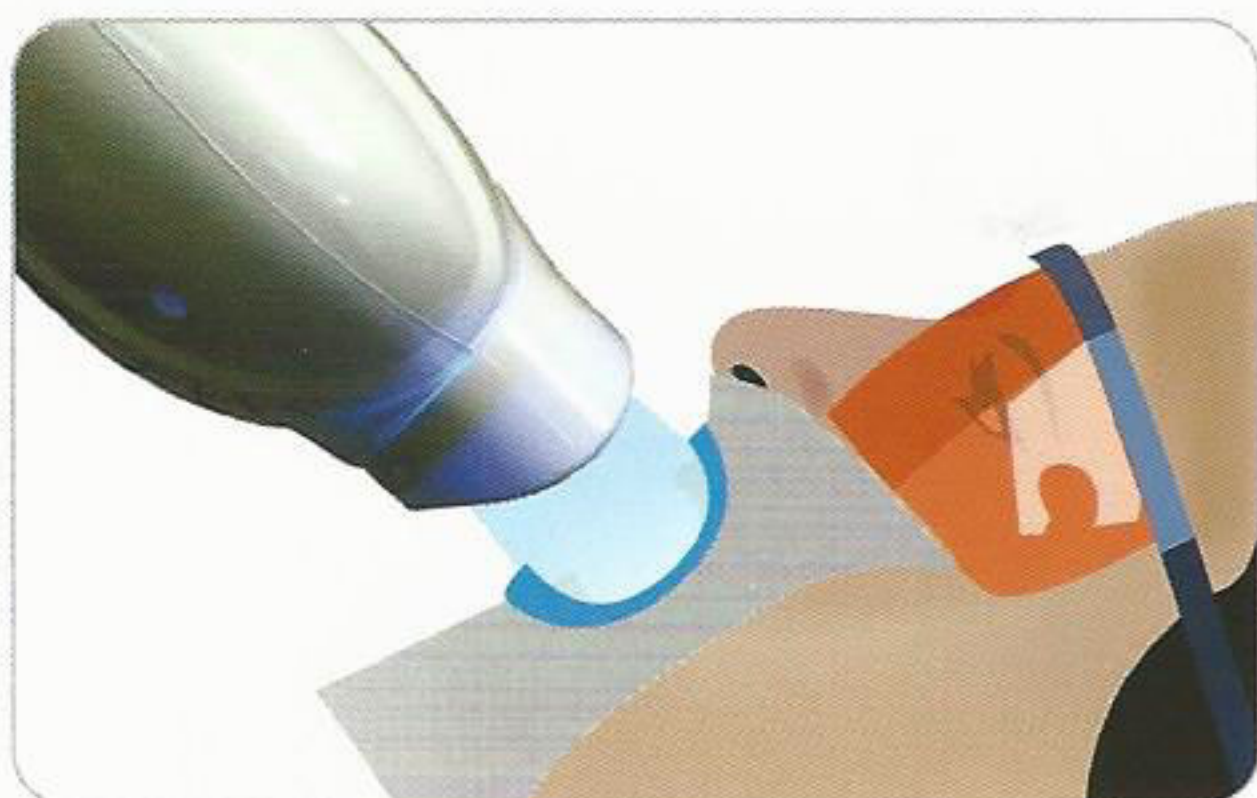
9. Prepare Whitening Gel

Put a mixing tip onto a syringe, and bleed out about 1" of material, then dispense about 1 ml of whitening gel into a provided dappen dish, be sure to use gloves and wear eye protection when handling whitening materials.



10. Apply Whitening Gel

Carefully apply the whitening gel onto the surfaces of the teeth using the mini brush, make sure the gel is evenly distributed at about 2 mm thick, maintaining about 1 mm away from the gingival, and all interproximal spaces are covered.



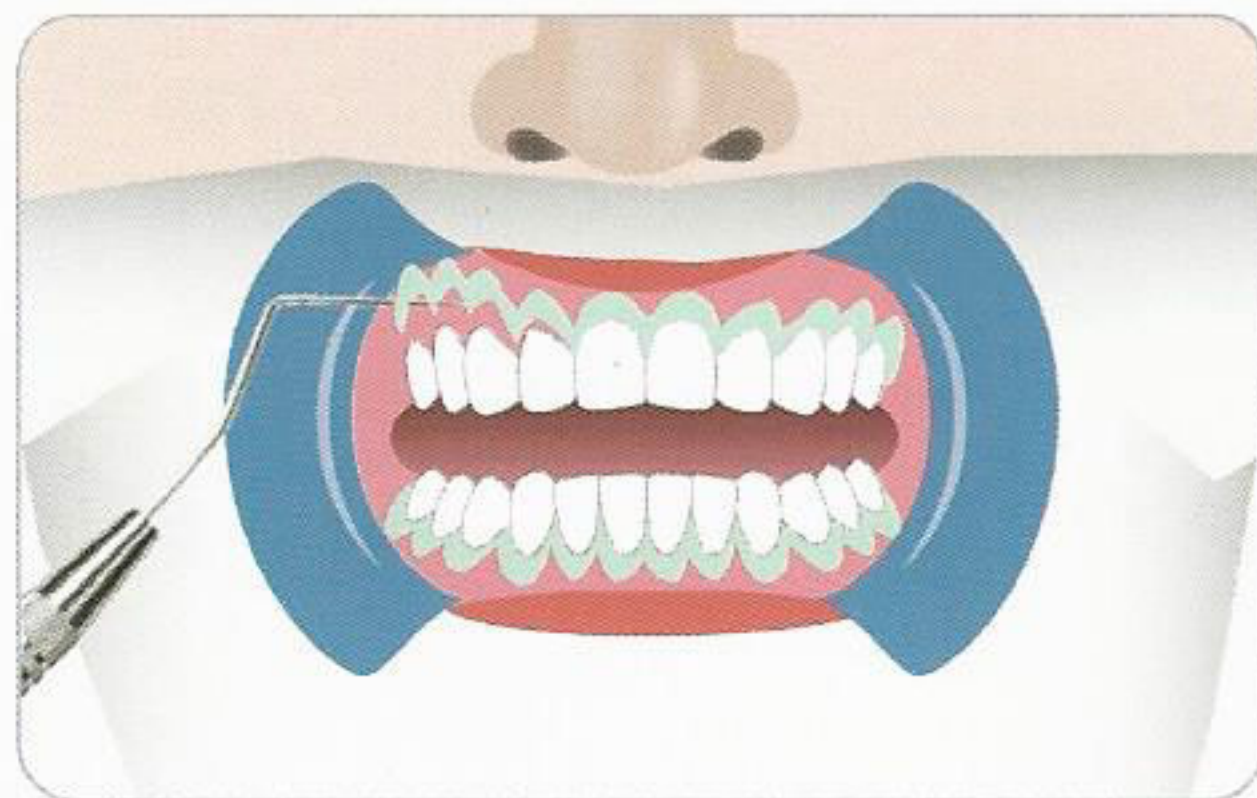
11. Optional Light Activation

Apply light from a bleaching light unit such as iBrite™ by placing the head against patient's mouth, and activate the programmed 15-minute session.



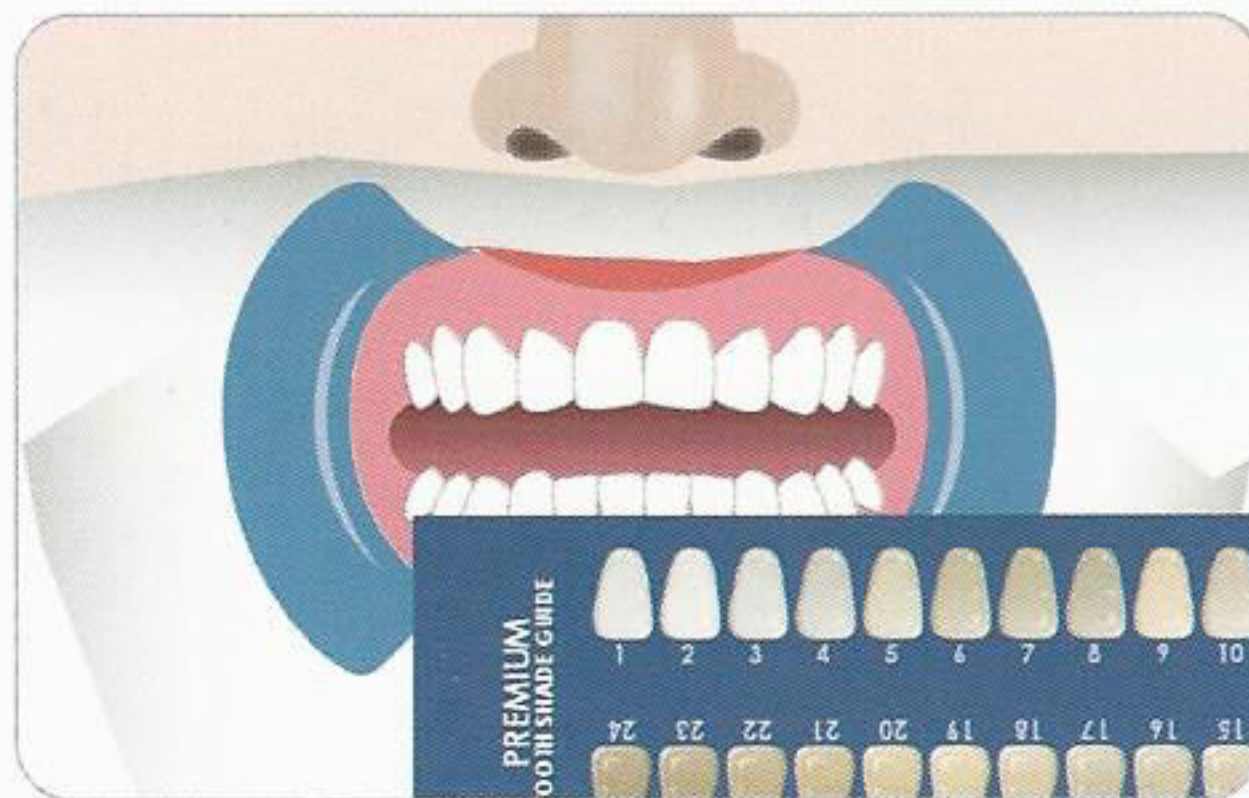
12. Additional Applications

Clean the gel from the teeth between applications by suctioning, DO NOT RINSE (patient's teeth must remain dry before applying whitening gel). Repeat step 9~10 for the 2nd and 3rd applications.



13. Clean Up

Remove the gingival barrier by gently lifting at one end with an explorer and peel. Rinse again and carefully inspect the gingival, and treat discolored areas with an aloe vera based gel or vitamin E.



14. Shade Analysis

After the whitening procedure, color match the teeth with the provided Shade Guide and take "After" photographs for your records.

Caution: If at any time during the procedure, the patient feels a tingling or burning sensation, remove the iBrite™ whitening gel and gingival barrier immediately, rinse thoroughly with copious amounts of water, and treat the affected areas with Remi™ Desensitizing and Remineralizing paste, or an aloe vera based gel or vitamin E.

** To reduce potential sensitivity, prescribe a Remi™ paste or desensitizing toothpaste. It is recommended to dispose of all iBrite™ whitening gel after each treatment.*